

D.C. UNITEDTM STADIUM



SECTION

08

TECHNICAL DRAWINGS: EASEMENT DIAGRAMS

STADIUM TECHNICAL
DRAWINGS

STADIUM MULTI USE
CONFIGURATIONS

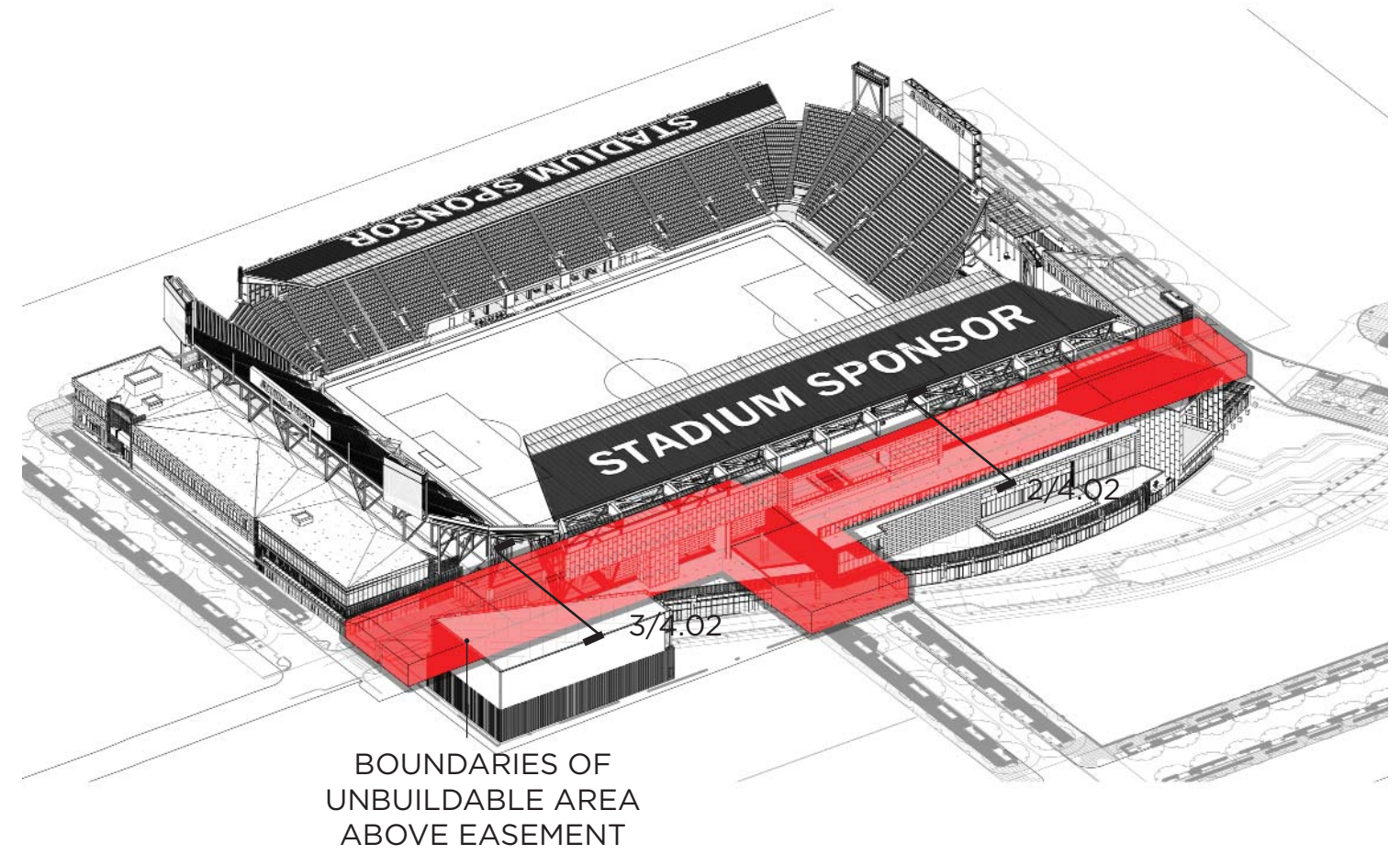
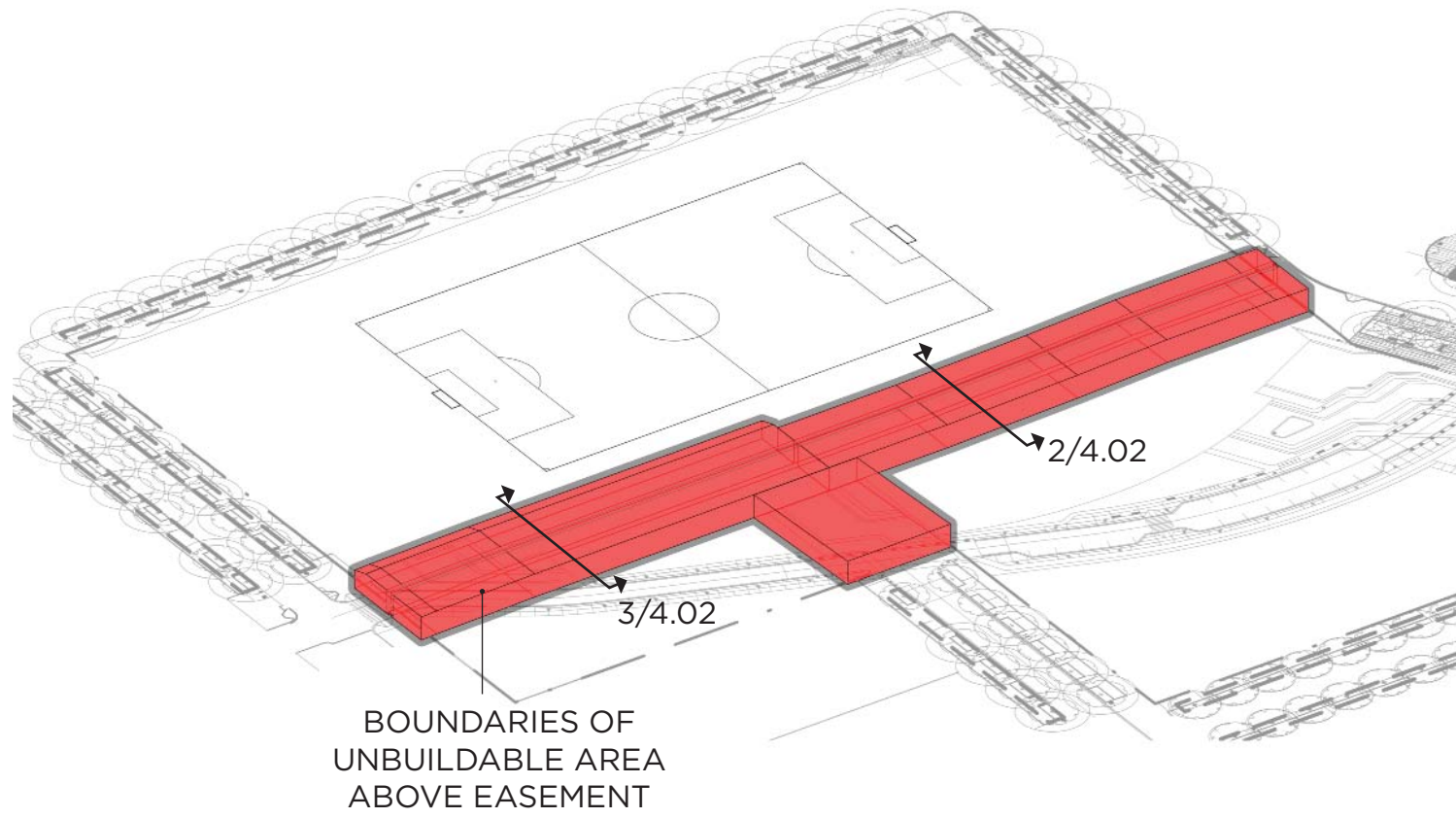
CIVIL TECHNICAL
DRAWINGS

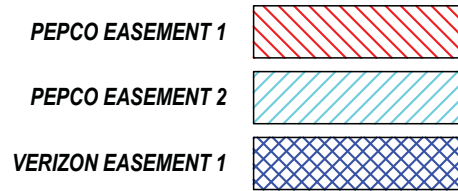
- 8.01 EASEMENT DIAGRAMS
- 8.02 EASEMENT DIAGRAMS

- 8.03 LVL 00 - BASEMENT LEVEL PLAN
- 8.04 LVL 01 - FIELD LEVEL PLAN
- 8.05 LVL 02 - CLUB LEVEL PLAN
- 8.06 LVL 03 - SUITE LEVEL PLAN
- 8.07 LVL 04 - UPPER CONCOURSE PLAN
- 8.08 LVL 05 - ROOF PLAN
- 8.09 OVERALL BUILDING SECTIONS
- 8.10 ENLARGED BUILDING SECTIONS

- 8.11 STADIUM MULTI USE CONFIGURATIONS
- 8.12 STADIUM MULTI USE CONFIGURATIONS
- 8.13 STADIUM MULTI USE CONFIGURATIONS
- 8.14 STADIUM MULTI USE CONFIGURATIONS

- 8.15 CIVIL - SITE BOUNDARY & EASEMENT PLAN
- 8.16 CIVIL - EXISTING CONDITIONS PLAN
- 8.17 CIVIL - INITIAL EROSION AND SEDIMENT CONTROL PLAN
- 8.18 CIVIL - ROUGH GRADING PLAN
- 8.19 CIVIL - ROUGH GRADING EROSION CONTROL PLAN
- 8.20 CIVIL - EROSION AND SEDIMENT CONTROL NOTES
- 8.21 CIVIL - VEGETATIVE STABILIZATION AND SPECIFICATIONS
- 8.22 CIVIL - EROSION AND SEDIMENT CONTROL DETAILS
- 8.23 CIVIL - EROSION AND SEDIMENT CONTROL DETAILS
- 8.24 CIVIL - UTILITY PLAN

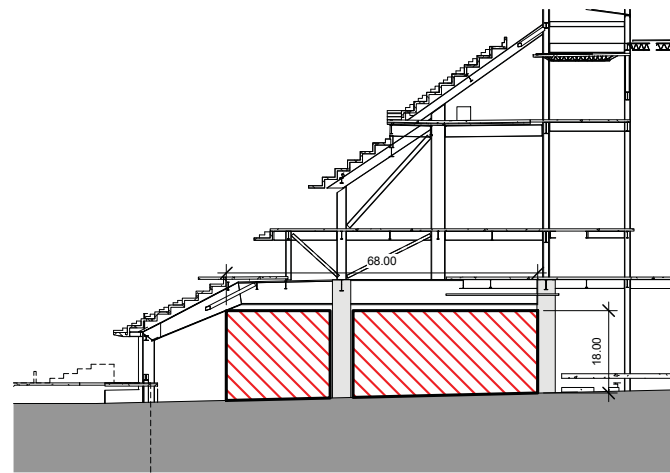




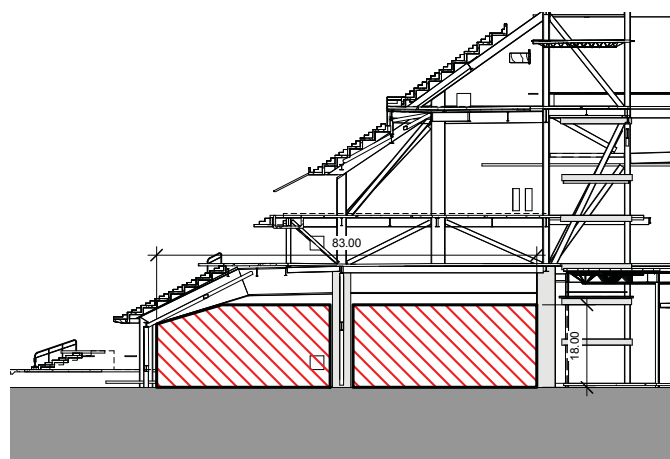
PART B - NOT PART OF STADIUM
PUD SUBMISSION, DESIGN INTENT
SHOWN FOR REFERENCE ONLY

PUBLIC REALM - NOT PART OF PUD
SUBMISSION, DESIGN INTENT SHOWN
FOR REFERENCE ONLY

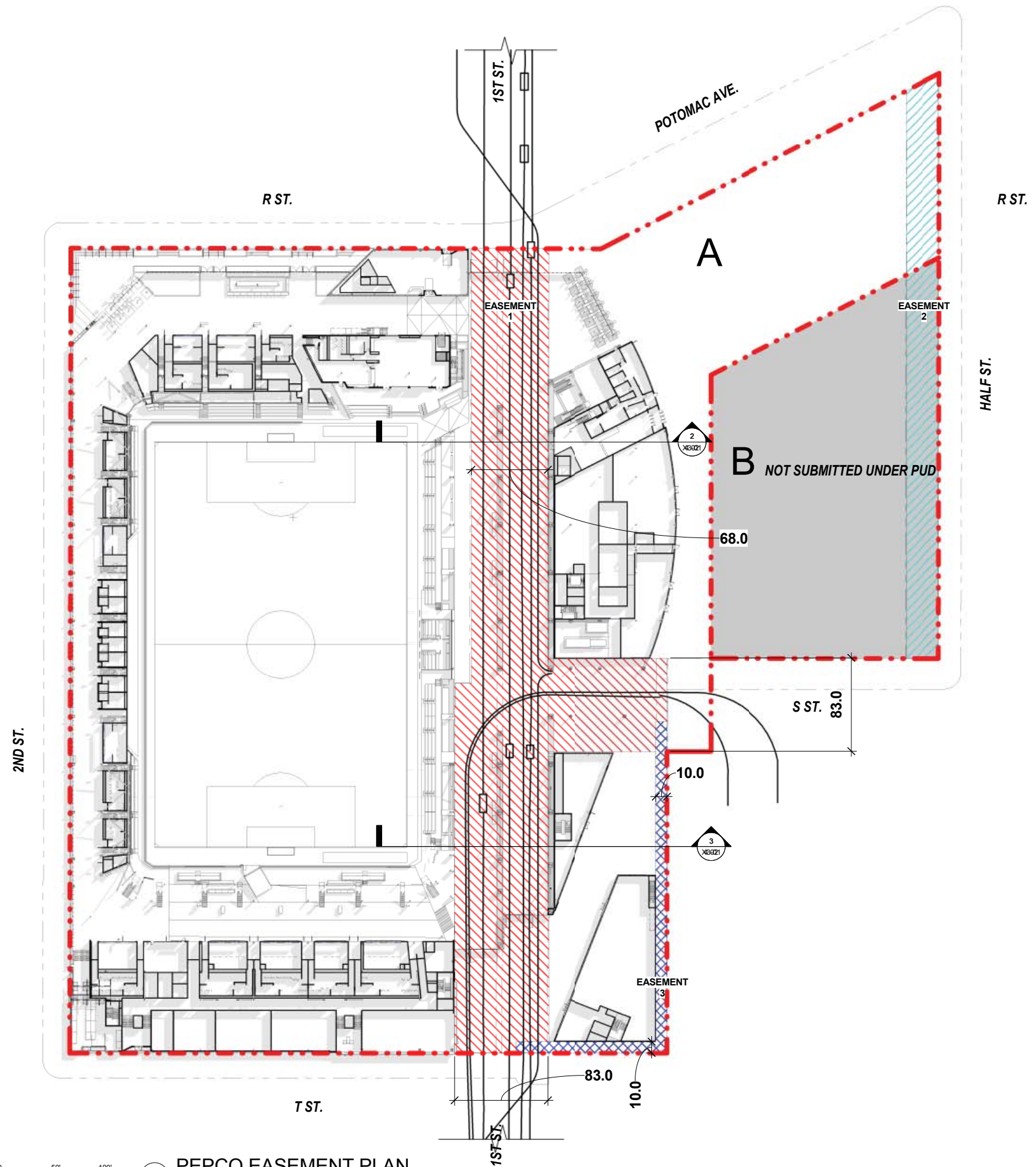
DISTRICT OF COLUMBIA RESPONSIBLE
FOR DESIGN OF PUBLIC REALM



0 10' 20' 40' **2** EASEMENT SECTION
1" = 20'-0"



0 10' 20' 40' **3** EASEMENT SECTION
1" = 20'-0"



0 50' 100' **1** PEPCO EASEMENT PLAN
1" = 50'-0"

POPULOUS
Marshall | Moya Design



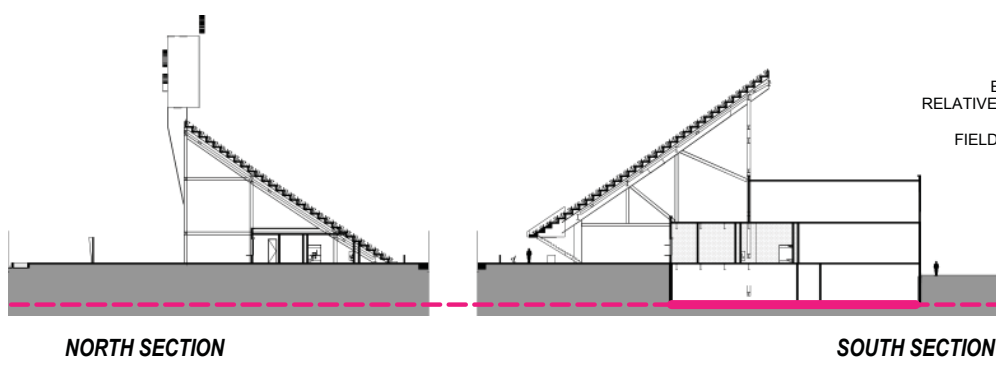
DC UNITED SOCCER STADIUM
100 Potomac Avenue, SW
Washington, DC 20024

- 1 - SPECTATOR FACILITIES
- 1 - SPECTATOR FACILITIES - PREMIUM
- 1 - SPECTATOR FACILITIES - PREMIUM PATIO
- 2 - FOOD SERVICE & RETAIL
- 2 - FOOD SERVICE & RETAIL - NON STADIUM
- 3 - TEAM FACILITIES
- 3 - TEAM FACILITIES HOME
- 4 - MEDIA FACILITIES
- 5 - ADMINISTRATION FACILITIES
- 6 - SERVICE & OPERATIONS
- 7 - CIRCULATION
- 7 - VERTICAL CIRCULATION
- 8 - BIKE VALET

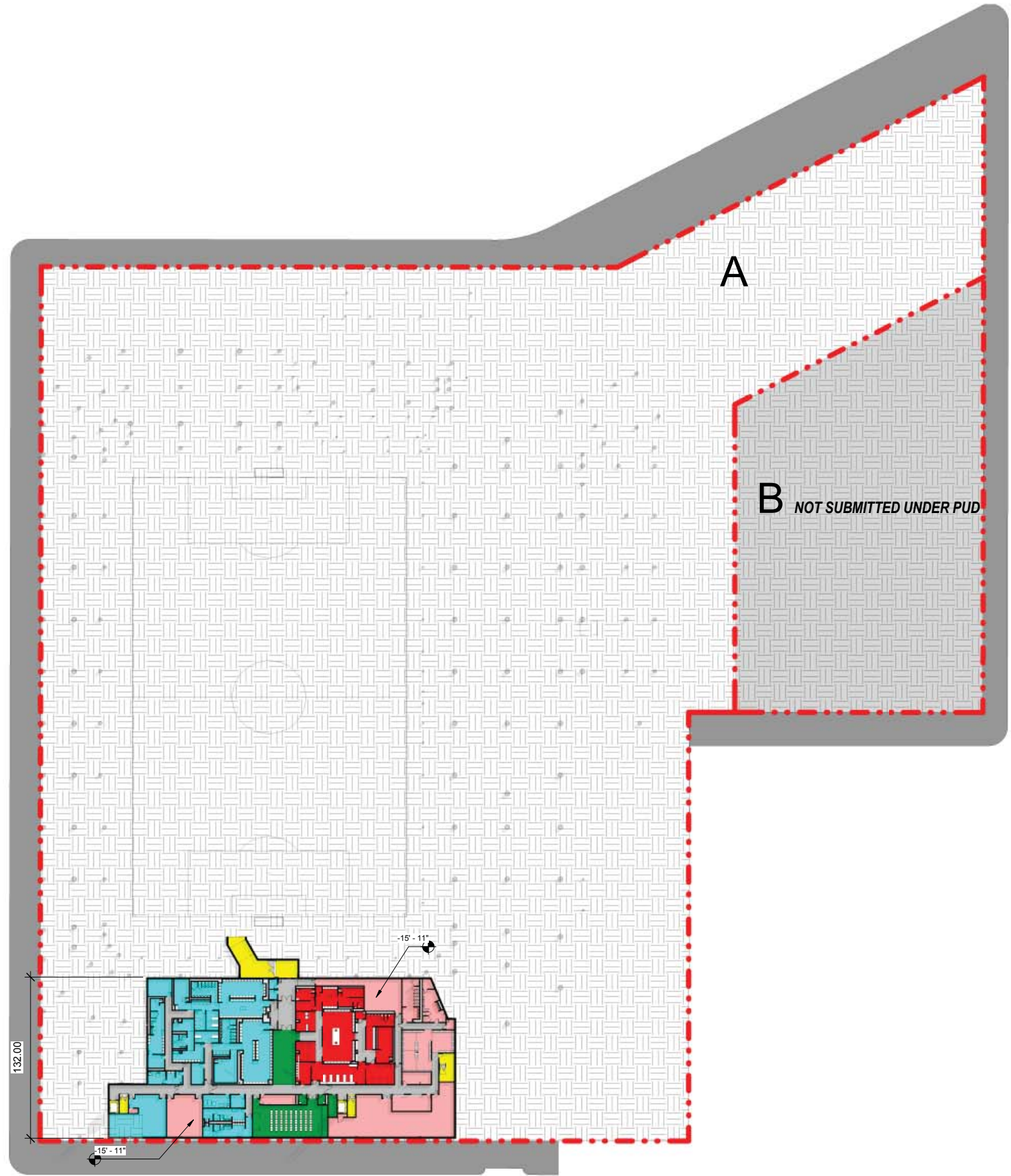
**PART B - NOT PART OF STADIUM
PUD SUBMISSION, DESIGN INTENT
SHOWN FOR REFERENCE ONLY**

**PUBLIC REALM - NOT PART OF PUD
SUBMISSION, DESIGN INTENT SHOWN
FOR REFERENCE ONLY**

**DISTRICT OF COLUMBIA RESPONSIBLE
FOR DESIGN OF PUBLIC REALM**



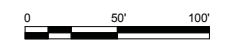
ELEVATIONS ARE
RELATIVE TO FIELD LEVEL
FIELD LEVEL @ +22'-0"
ABOVE SEA
LEVEL



POPULOUS
Marshall | Moya Design



DC UNITED SOCCER STADIUM
100 Potomac Avenue, SW
Washington, DC 20024

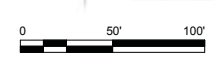
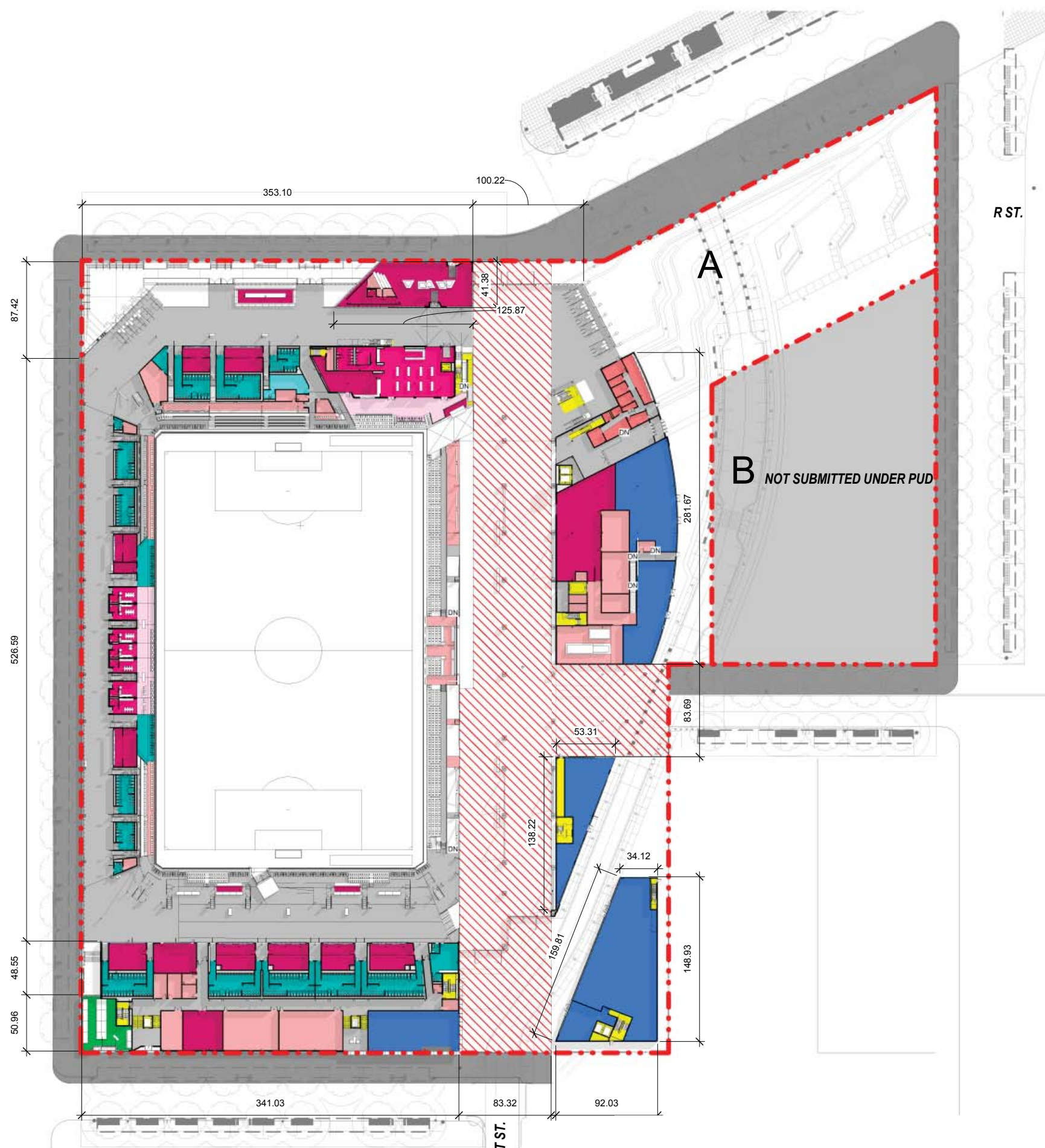
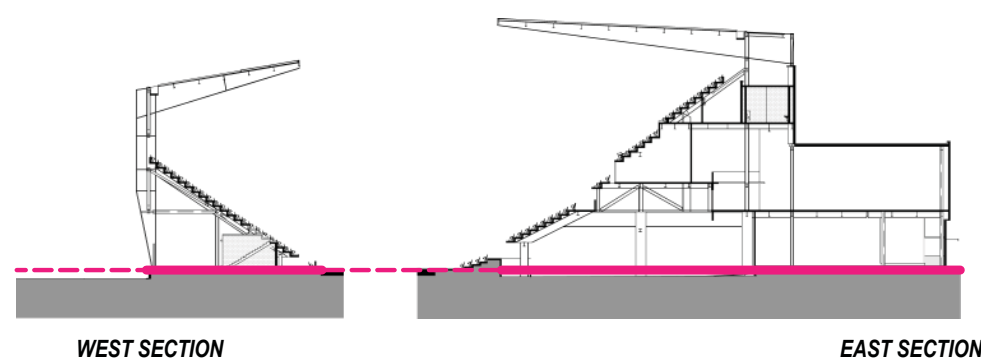


- 1 - SPECTATOR FACILITIES
- 1 - SPECTATOR FACILITIES - PREMIUM
- 1 - SPECTATOR FACILITIES - PREMIUM PATIO
- 2 - FOOD SERVICE & RETAIL
- 2 - FOOD SERVICE & RETAIL - NON STADIUM
- 3 - TEAM FACILITIES
- 3 - TEAM FACILITIES HOME
- 4 - MEDIA FACILITIES
- 5 - ADMINISTRATION FACILITIES
- 6 - SERVICE & OPERATIONS
- 7 - CIRCULATION
- 7 - VERTICAL CIRCULATION
- 8 - BIKE VALET

PART B - NOT PART OF STADIUM
PUD SUBMISSION, DESIGN INTENT
SHOWN FOR REFERENCE ONLY

PUBLIC REALM - NOT PART OF PUD
SUBMISSION, DESIGN INTENT SHOWN
FOR REFERENCE ONLY

DISTRICT OF COLUMBIA RESPONSIBLE
FOR DESIGN OF PUBLIC REALM



1 FIELD LEVEL PLAN
 1" = 50'-0"

POPULOUS
 Marshall | Moya Design



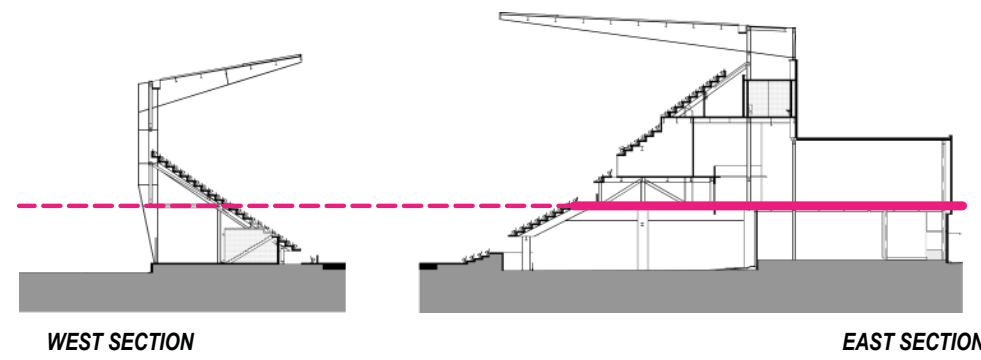
DC UNITED SOCCER STADIUM
 100 Potomac Avenue, SW
 Washington, DC 20024

- 1 - SPECTATOR FACILITIES
- 1 - SPECTATOR FACILITIES - PREMIUM
- 1 - SPECTATOR FACILITIES - PREMIUM PATIO
- 2 - FOOD SERVICE & RETAIL
- 2 - FOOD SERVICE & RETAIL - NON STADIUM
- 3 - TEAM FACILITIES
- 3 - TEAM FACILITIES HOME
- 4 - MEDIA FACILITIES
- 5 - ADMINISTRATION FACILITIES
- 6 - SERVICE & OPERATIONS
- 7 - CIRCULATION
- 7 - VERTICAL CIRCULATION
- 8 - BIKE VALET

PART B - NOT PART OF STADIUM
PUD SUBMISSION, DESIGN INTENT
SHOWN FOR REFERENCE ONLY

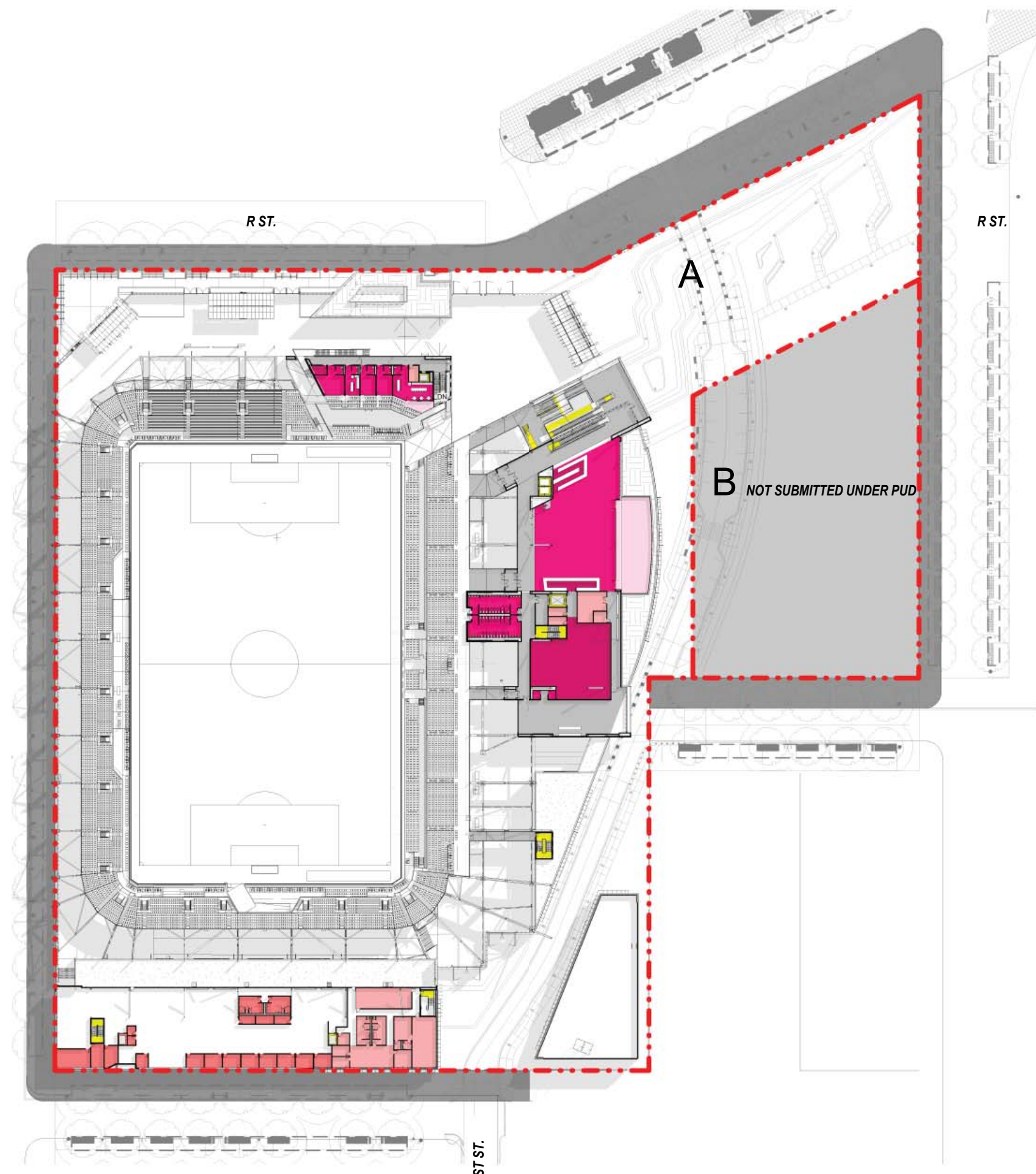
PUBLIC REALM - NOT PART OF PUD
SUBMISSION, DESIGN INTENT SHOWN
FOR REFERENCE ONLY

DISTRICT OF COLUMBIA RESPONSIBLE
FOR DESIGN OF PUBLIC REALM

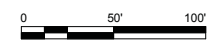


WEST SECTION

EAST SECTION



1 CLUB LEVEL PLAN
 1" = 50'-0"



POPULOUS
 Marshall | Moya Design



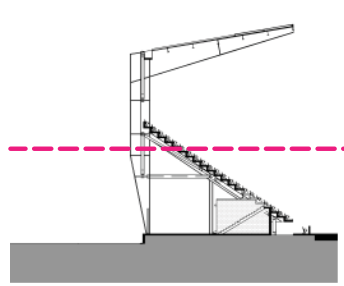
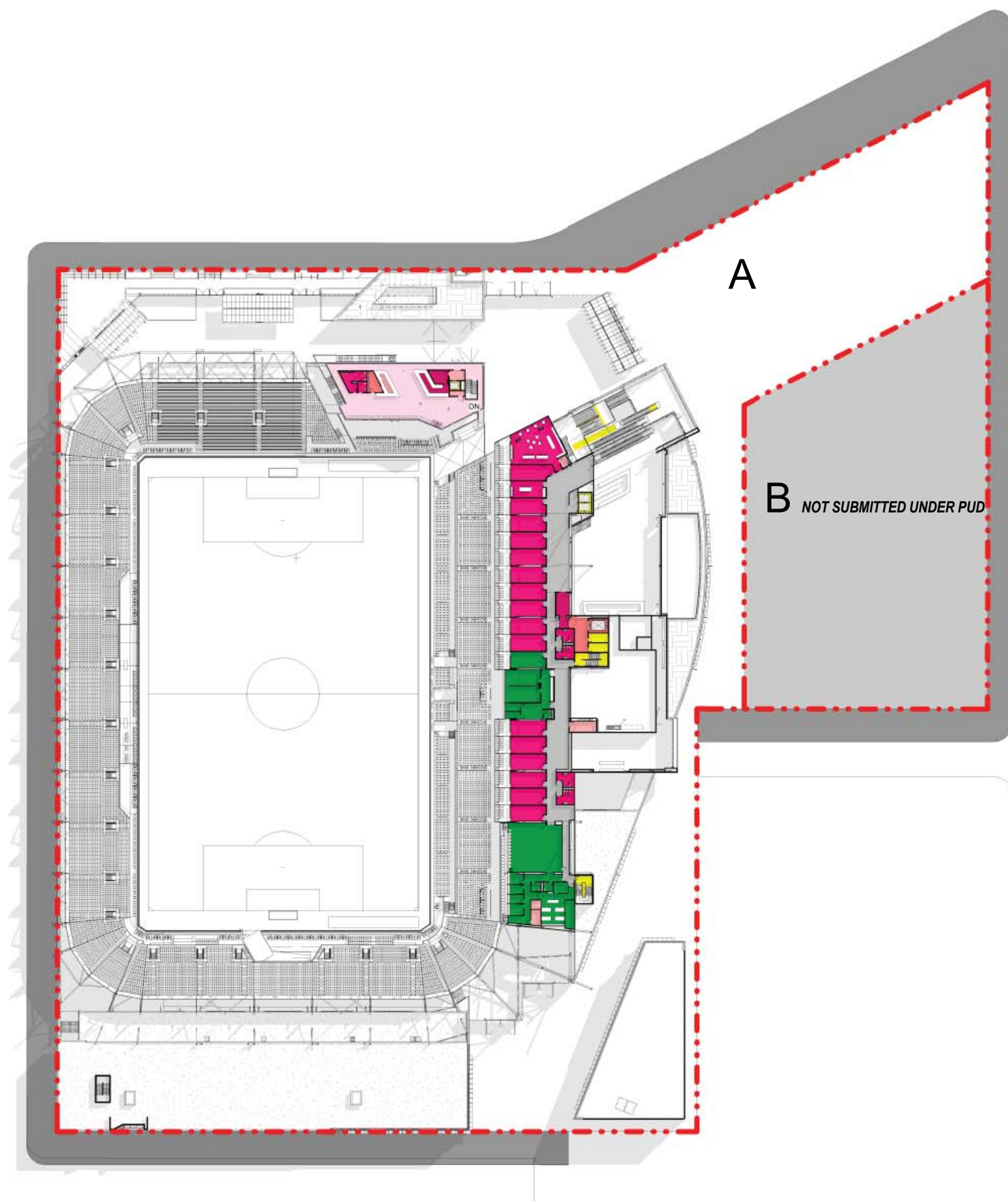
DC UNITED SOCCER STADIUM
 100 Potomac Avenue, SW
 Washington, DC 20024

- 1 - SPECTATOR FACILITIES
- 1 - SPECTATOR FACILITIES - PREMIUM
- 1 - SPECTATOR FACILITIES - PREMIUM PATIO
- 2 - FOOD SERVICE & RETAIL
- 2 - FOOD SERVICE & RETAIL - NON STADIUM
- 3 - TEAM FACILITIES
- 3 - TEAM FACILITIES HOME
- 4 - MEDIA FACILITIES
- 5 - ADMINISTRATION FACILITIES
- 6 - SERVICE & OPERATIONS
- 7 - CIRCULATION
- 7 - VERTICAL CIRCULATION
- 8 - BIKE VALET

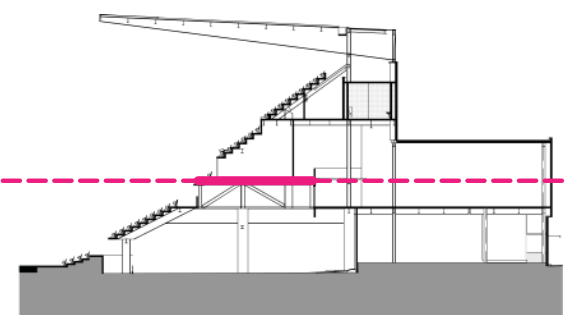
PART B - NOT PART OF STADIUM
PUD SUBMISSION, DESIGN INTENT
SHOWN FOR REFERENCE ONLY

PUBLIC REALM - NOT PART OF PUD
SUBMISSION, DESIGN INTENT SHOWN
FOR REFERENCE ONLY

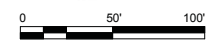
DISTRICT OF COLUMBIA RESPONSIBLE
FOR DESIGN OF PUBLIC REALM



WEST SECTION



EAST SECTION



1 SUITE LEVEL PLAN
 1" = 50'-0"

1ST ST.

R ST.

A

B NOT SUBMITTED UNDER PUD

POPULOUS
 Marshall | Moya Design



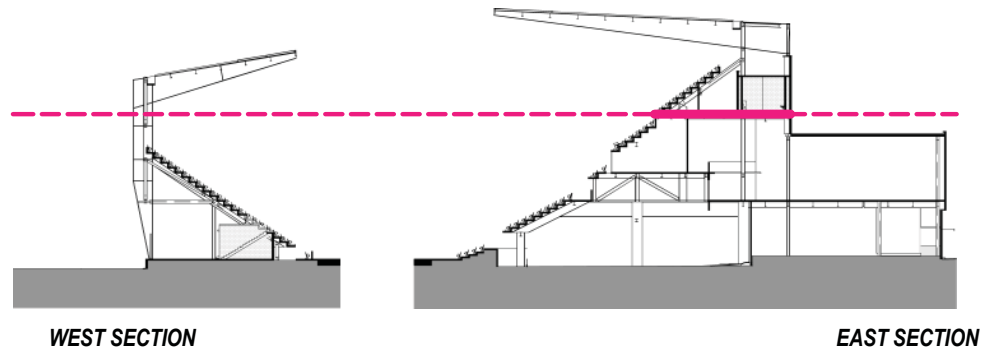
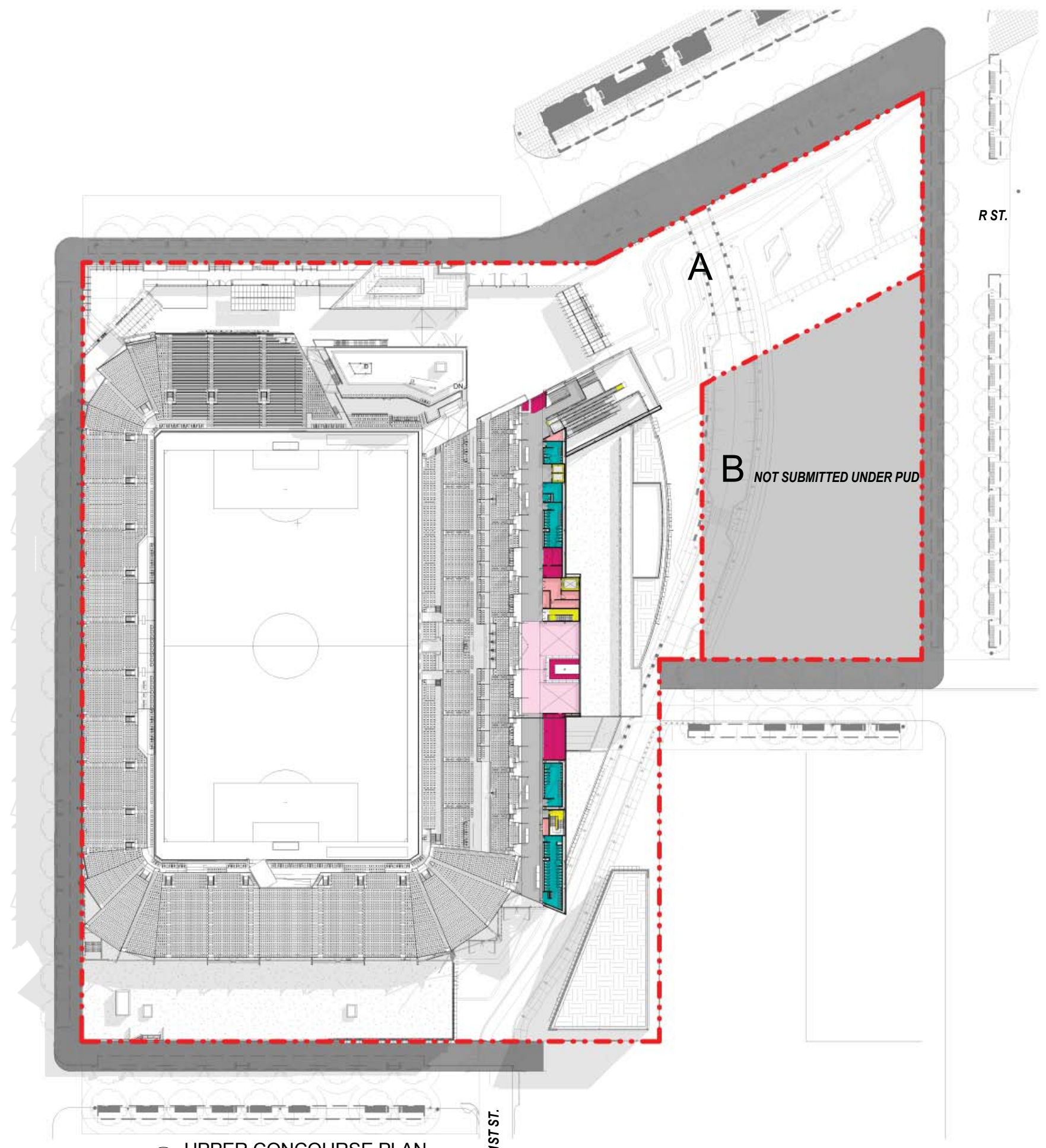
DC UNITED SOCCER STADIUM
 100 Potomac Avenue, SW
 Washington, DC 20024

- 1 - SPECTATOR FACILITIES
- 1 - SPECTATOR FACILITIES - PREMIUM
- 1 - SPECTATOR FACILITIES - PREMIUM PATIO
- 2 - FOOD SERVICE & RETAIL
- 2 - FOOD SERVICE & RETAIL - NON STADIUM
- 3 - TEAM FACILITIES
- 3 - TEAM FACILITIES HOME
- 4 - MEDIA FACILITIES
- 5 - ADMINISTRATION FACILITIES
- 6 - SERVICE & OPERATIONS
- 7 - CIRCULATION
- 7 - VERTICAL CIRCULATION
- 8 - BIKE VALET

**PART B - NOT PART OF STADIUM
PUD SUBMISSION, DESIGN INTENT
SHOWN FOR REFERENCE ONLY**

**PUBLIC REALM - NOT PART OF PUD
SUBMISSION, DESIGN INTENT SHOWN
FOR REFERENCE ONLY**

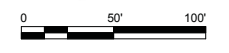
**DISTRICT OF COLUMBIA RESPONSIBLE
FOR DESIGN OF PUBLIC REALM**



POPULOUS
Marshall | Moya Design



DC UNITED SOCCER STADIUM
100 Potomac Avenue, SW
Washington, DC 20024

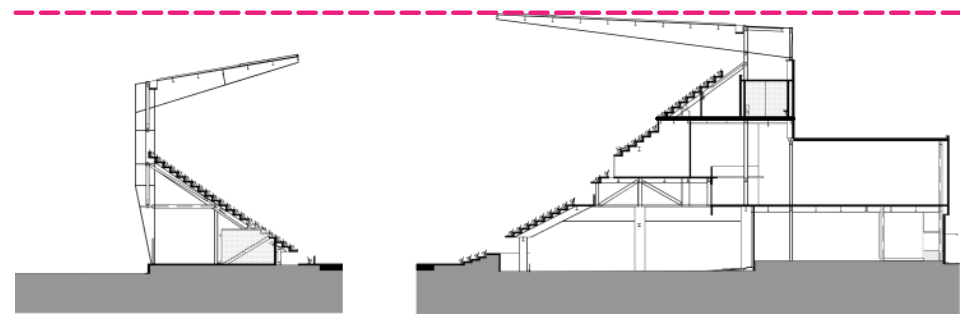


- 1 - SPECTATOR FACILITIES
- 1 - SPECTATOR FACILITIES - PREMIUM
- 1 - SPECTATOR FACILITIES - PREMIUM PATIO
- 2 - FOOD SERVICE & RETAIL
- 2 - FOOD SERVICE & RETAIL - NON STADIUM
- 3 - TEAM FACILITIES
- 3 - TEAM FACILITIES HOME
- 4 - MEDIA FACILITIES
- 5 - ADMINISTRATION FACILITIES
- 6 - SERVICE & OPERATIONS
- 7 - CIRCULATION
- 7 - VERTICAL CIRCULATION
- 8 - BIKE VALET

PART B - NOT PART OF STADIUM
PUD SUBMISSION, DESIGN INTENT
SHOWN FOR REFERENCE ONLY

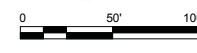
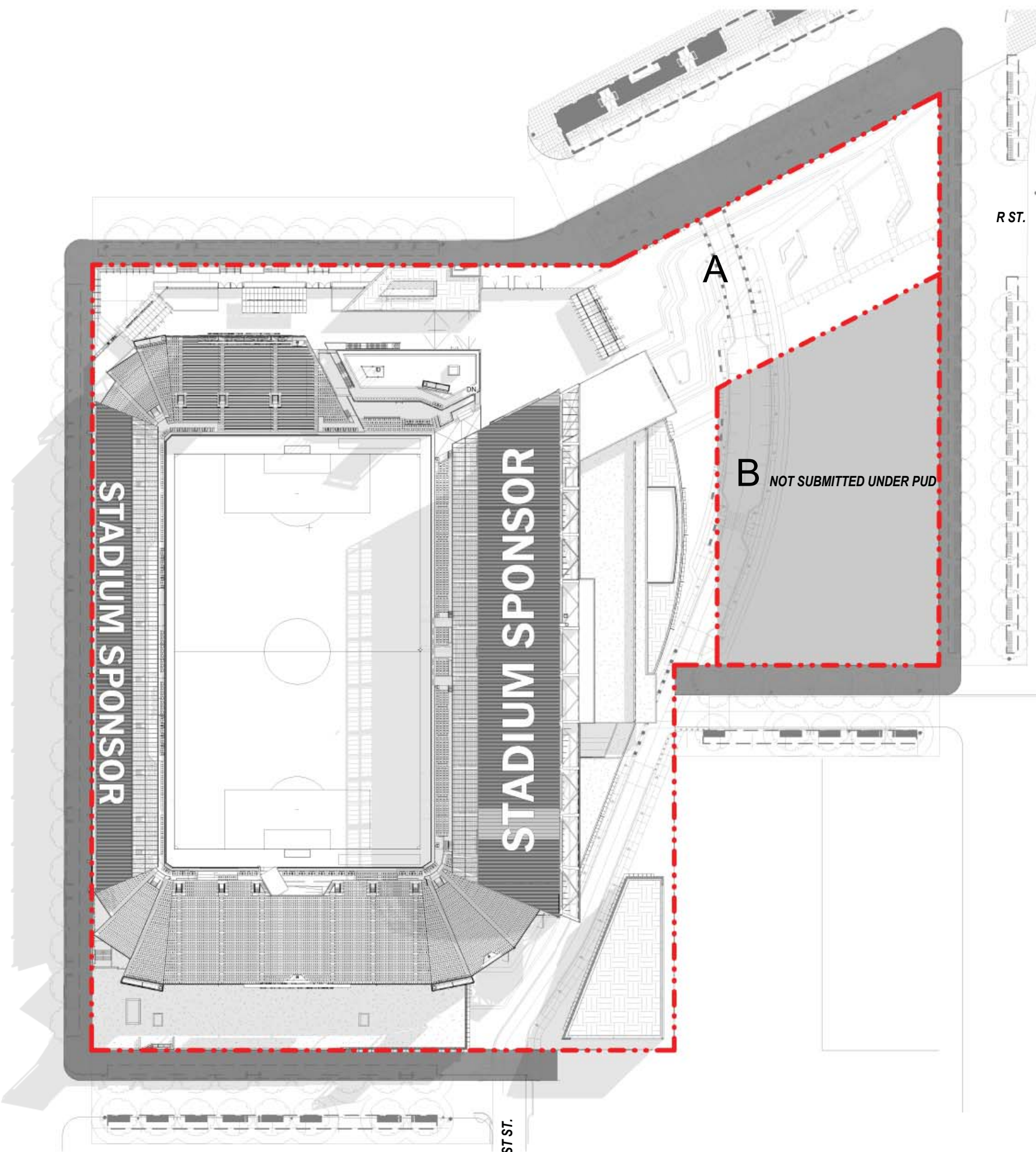
PUBLIC REALM - NOT PART OF PUD
SUBMISSION, DESIGN INTENT SHOWN
FOR REFERENCE ONLY

DISTRICT OF COLUMBIA RESPONSIBLE
FOR DESIGN OF PUBLIC REALM



WEST SECTION

EAST SECTION

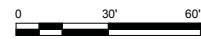
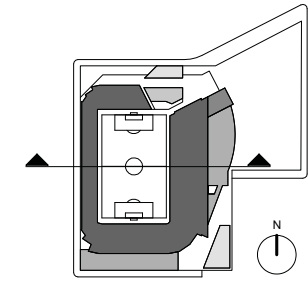
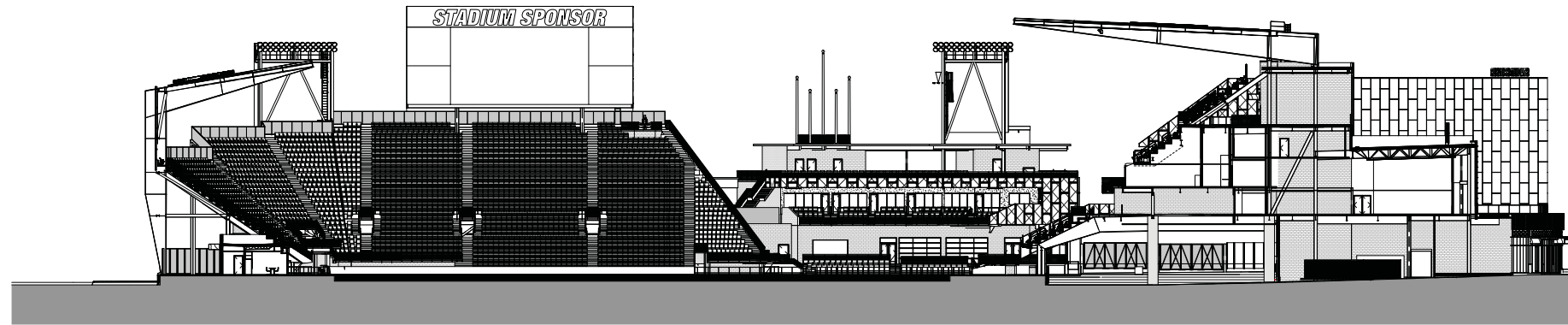


1 ROOF PLAN
 1" = 50'-0"

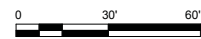
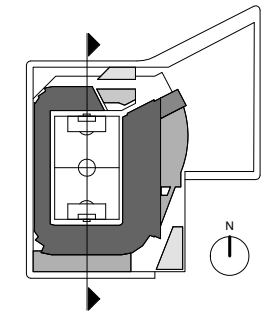
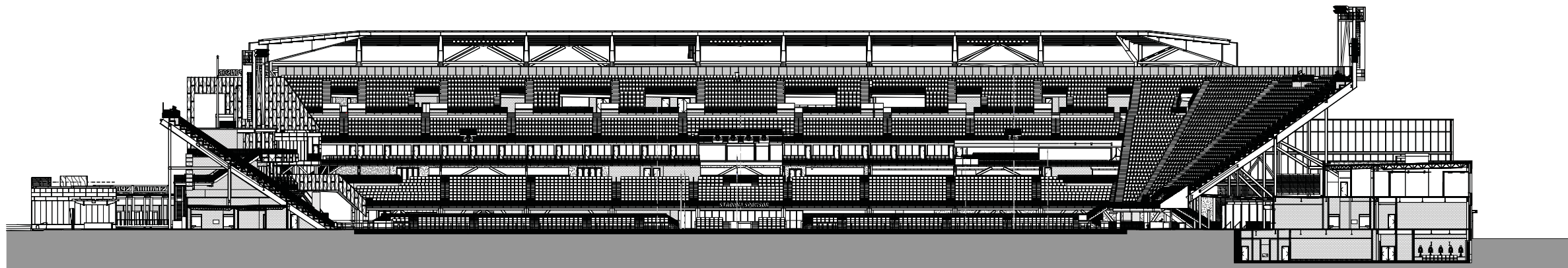
POPULOUS
 Marshall | Moya Design



DC UNITED SOCCER STADIUM
 100 Potomac Avenue, SW
 Washington, DC 20024



1 E - W SECTION LOOKING NORTH
1" = 30'-0"



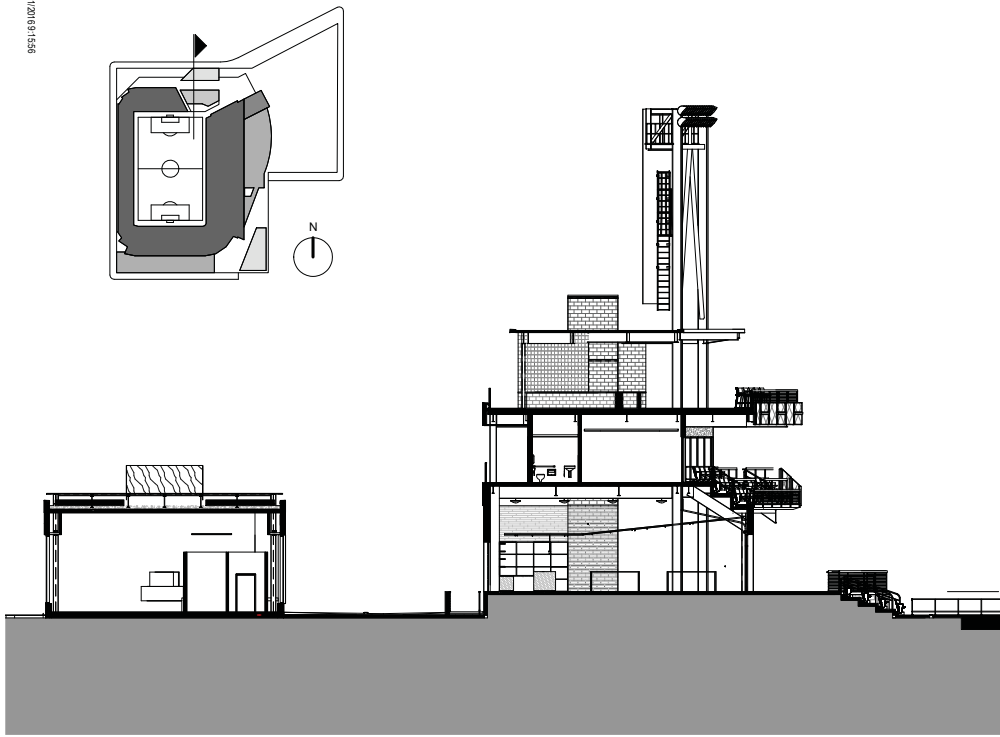
2 N - S SECTION LOOKING EAST
1" = 30'-0"

POPULOUS
Marshall | Moya Design

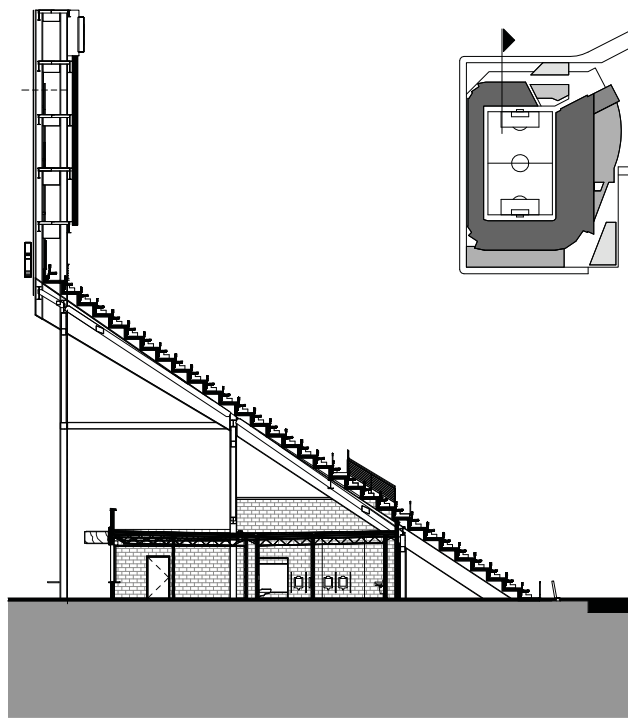


DC UNITED SOCCER STADIUM
100 Potomac Avenue, SW
Washington, DC 20024

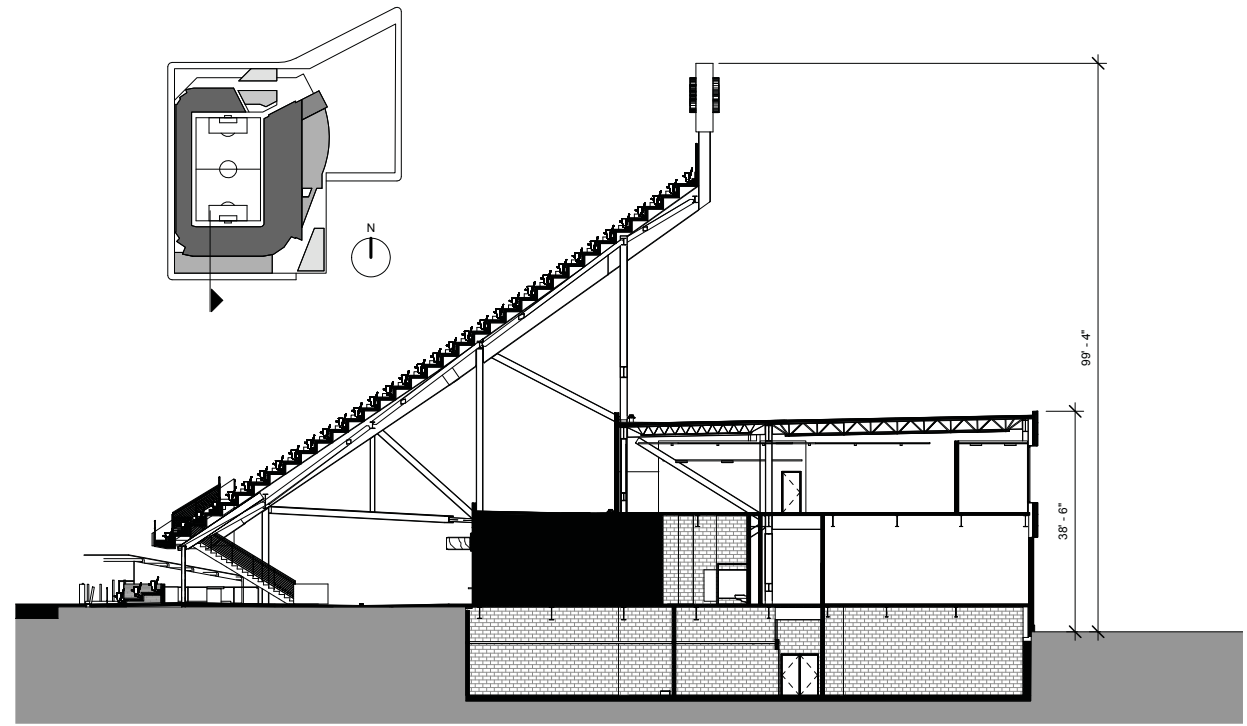
11/11/2015
9515-0101111



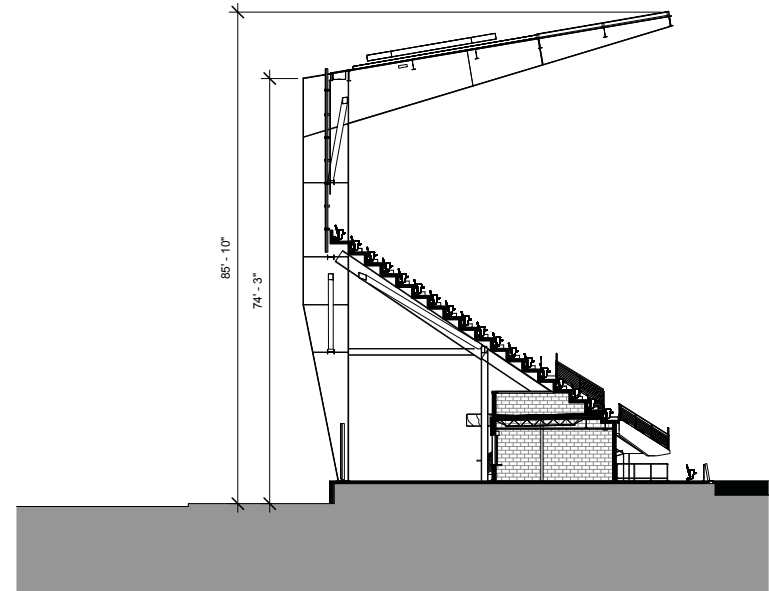
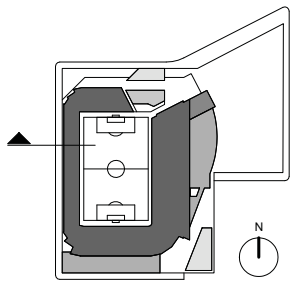
5 NORTH ENLARGED SECTION @ CLUB
1/16" = 1'-0"



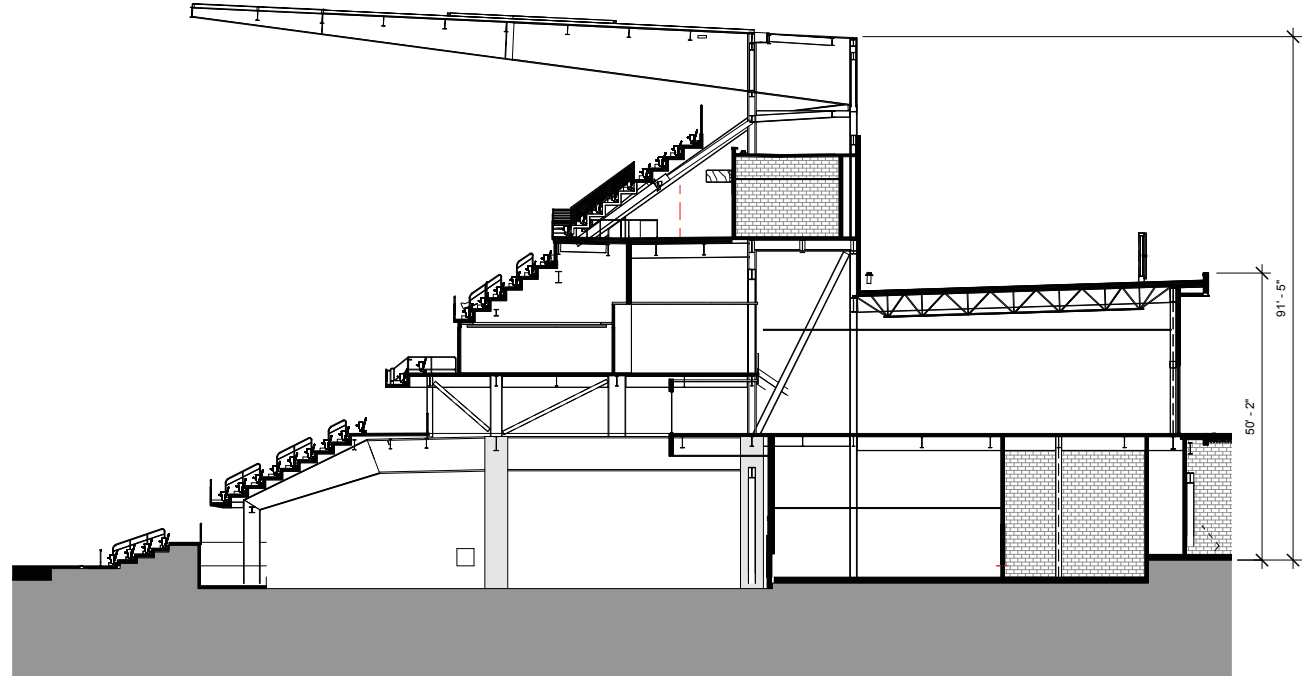
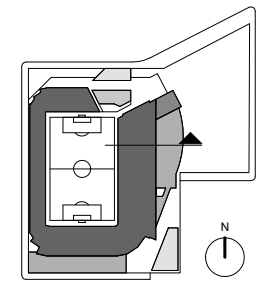
4 NORTH ENLARGED SECTION
1/16" = 1'-0"



3 SOUTH ENLARGED SECTION
1/16" = 1'-0"



2 EAST ENLARGED SECTION
1/16" = 1'-0"



1 EAST ENLARGED SECTION
1/16" = 1'-0"

POPULOUS
Marshall | Moya Design



DC UNITED SOCCER STADIUM
100 Potomac Avenue, SW
Washington, DC 20024